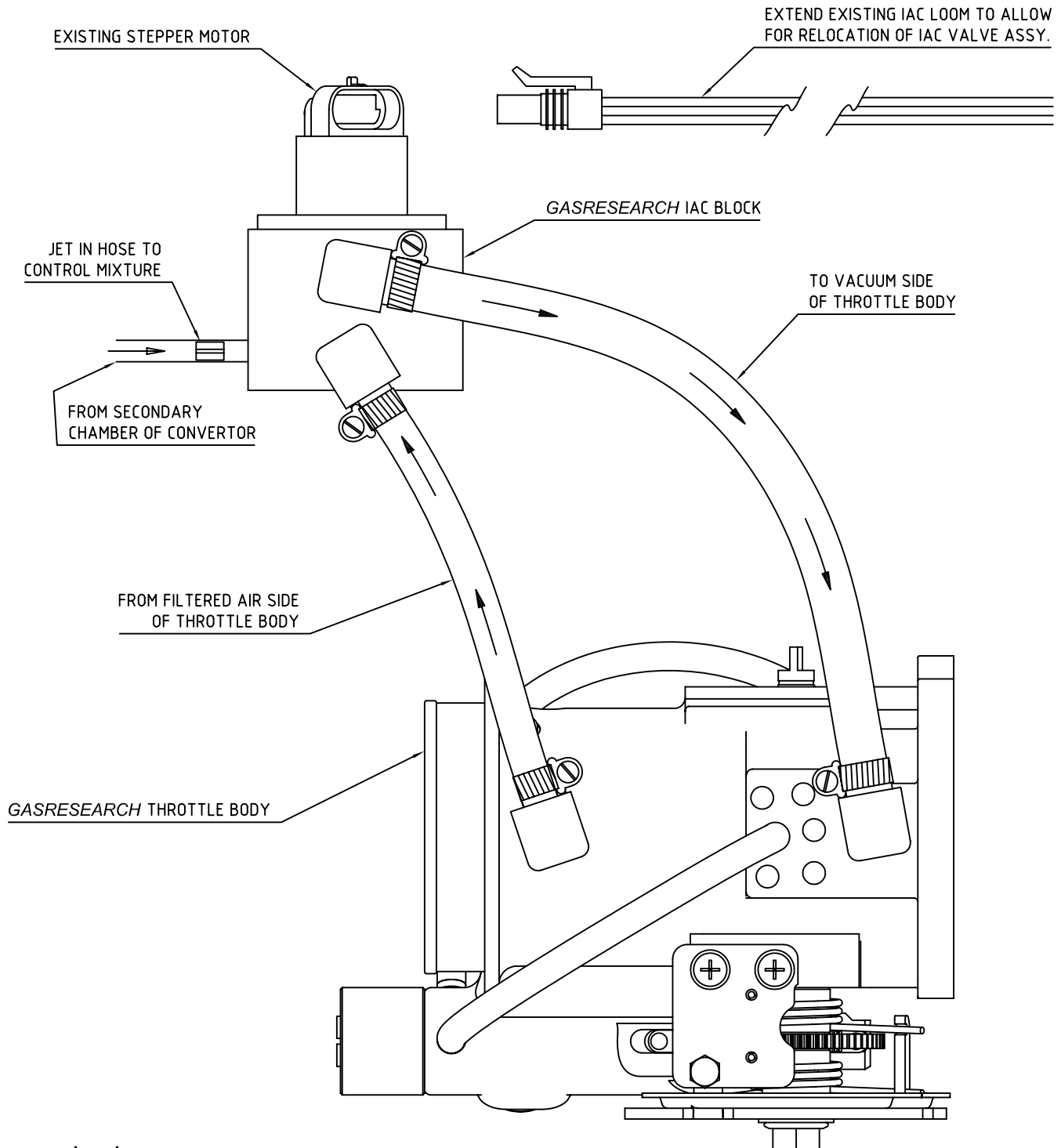


INSTALLATION INSTRUCTIONS: **CONCENTRIC TYPE IDLE AIR CONTROL VALVE**



Important:

The LPG supply hose from the secondary chamber must be plumbed into the air supply side of the IAC valve. Not the vacuum side.

1. Set idle speed/fuel mixture on the GasResearch throttle body with the vacuum hose from the IAC valve blocked off.
2. Once the idle speed/fuel mixture is set correctly remember to unblock the hose.
3. Engage the air conditioning.
4. Jet the secondary chamber hose for correct mixtures.